



HAINES

Volume 3, Edition 2

Please forward to the Science Coordinator

SNAPSHOT SPECIALS

COVID-19

Assemble this fully detailed Covid-19 coronavirus model, 50 parts, about 20cm wide.

NEW
624004
\$65
each



TORSO, DELUXE

This 4D torso model demonstrates the complexities of a human body. 54 removable parts. 38cm tall with stand and illustrated assembly guide.



NEW
26080
\$225
each



DELUXE MIRROR/LENS SET ON STAND, SET/4

This set includes the following items, one of each: biconvex lens, convex mirror, biconcave lens and concave mirror. Each mirror/lens measures 20 cm high and the diameter of the mirror/lens is 9 cm.

G020
\$49.50
each



SKULL ANATOMY MODEL

Build a human anatomy model of the skull! This exceptionally detailed, 9cm model contains 17 detachable parts and a display stand.

NEW
26087
\$60.30
each



MUSCLE & SKELETON ANATOMY MODEL

Piece together the 46 parts and learn all about human muscles and the skeleton. Assembly guide included. When assembled model stands about 18cm tall.

NEW
26058
\$40.50
each



DELUXE HEART ANATOMY MODEL

This exceptionally detailed model gives you a deep understanding of the human heart. Size 7.25cm tall with stand and illustrated assembly guide.

NEW
26081
\$135
each



HAINES EDUCATIONAL

1300 330 232

(03) 8736 6020



52 GILBERT PARK DRIVE KNOXFIELD VIC 3180



sales@haines.com.au



www.haines.com.au

HAINES NOW SELLS CHEMICALS

Check out our catalogue for details. Contact us if you haven't already received one.

Prices do not include GST

TRANSPARENT TORSO ANATOMY MODEL

Build your own anatomy model of the human torso! 37 detachable, hand-painted parts. Size 20cm.



NEW 26068
\$54
each

AQUAPOD BOTTLE ROCKET

This is the most exciting and safest bottle rocket launcher ever. All you need is any 2 litre plastic soft-drink bottle with a bit of water in it and pump it up using the supplied air pump. By using a safety pull rope; you can launch a bottle up to 30 metres in the air!



NEW G319
\$49
each

SKULL ANATOMY MODEL

Build your own human anatomy model of the brain! This exceptionally detailed, 9cm tall model contains 32 detachable, hand-painted parts and a display stand



NEW 26056
\$40.50
each

BANANA/BANANA, STACKABLE LEADS

BEST PRICE



~~WAS \$5 each~~
SPECIAL \$3.90 each

~~WAS \$5.50 each~~
SPECIAL \$4.50 each

~~WAS \$6.40 each~~
SPECIAL \$5 each

300MM

CODE	DESCRIPTION
P05313	Black
0695002	Blue
0695003	Green
P053R	Red
0695005	Yellow

600MM

CODE	DESCRIPTION
P056B	Black
0700002	Blue
0700003	Green
P056R	Red
0700005	Yellow

1200MM

CODE	DESCRIPTION
0705001	Black
0705002	Blue
0705003	Green
0705004	Red
0705005	Yellow

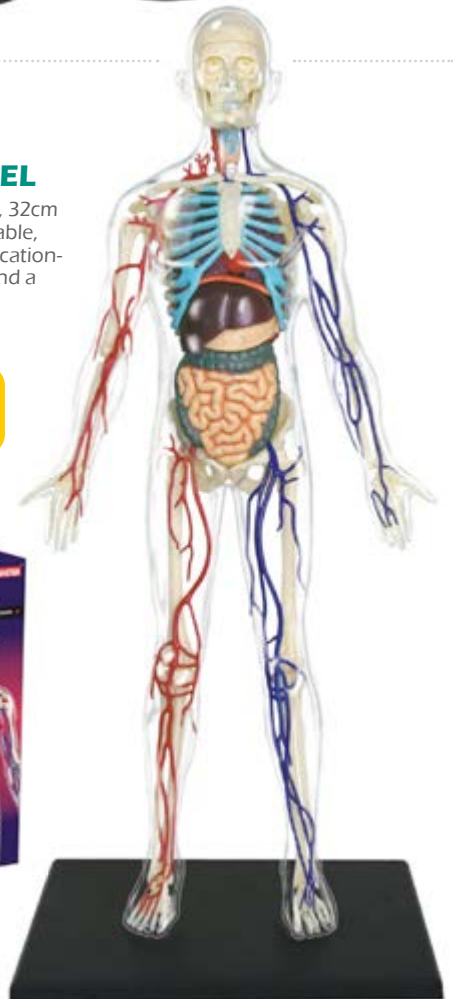
DOUBLE LEADS

CODE	DESCRIPTION	UNIT	PRICE \$
0710001	300mm Black/Red	each	10.70
0710002	600mm Black/Red	each	12.90
0710003	1200mm Black/Red	each	16.10

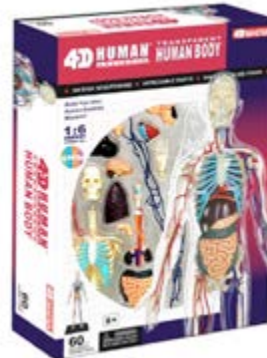


TRANSPARENT HUMAN BODY ANATOMY MODEL

This exceptionally detailed, 32cm model contains 60 detachable, hand-painted medical education-quality organs and parts and a display stand.



NEW 26070
\$79
each





PUMPING HEART & LUNG MODEL

Easy-to-use, multi-sensory model uses a simple hand pump to demonstrate basic heart and pulmonary blood flow. Creates a memorable exploration of how the heart and lungs work together for oxygen exchange. Measures approximately 30cm x 28cm x 13cm

NEW
LER3535
\$79
each

CONDUCTIVITY APPARATUS

This apparatus compares conductivity between different solutions. The green LED is numbered from 1 to 10 and will light up as the probes are dipped into a solution of salts or acids. Earth light represents a unique level of conductivity from very low (1) to very high (10) with brass probes.



NEW
P3694
\$42
each



NEW
C3671
\$29
each

GLASS TUBING, 5MM OD, 50CM LENGTH, PACK OF 10

Quality borosilicate glass tubing. Supplied in 50cm lengths, pack of 10. **Ideal fit for our range of stoppers.**

TRANSPARENT PREGNANCY TORSO ANATOMY MODEL

Detailed transparent 41-piece model of the female anatomy during pregnancy. 1:6 scale



NEW
26069
\$54
each

ALPHA SCATTERING DEMONSTRATION MODEL

This gravitational analogue is used to demonstrate Rutherford scattering of alpha particles (by inverse square rule repulsion). The apparatus comprises an aluminium hill measuring 280 x 60mm, a launching ramp with index marks for launching heights at 40, 60, 80, and 100mm, and two steel balls. Instructions included.



NEW
P742
\$89
each

RESPIROMETER

Measures the uptake of oxygen by an organism during respiration. The apparatus consists of two stoppered boiling tubes connected by three-way taps to either limb of graduated manometer. Complete with wire baskets for supporting organisms. Instructions included.



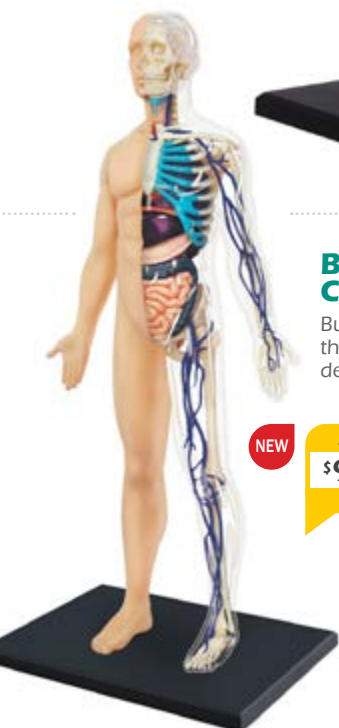
NEW
B973
\$69
each

WEIGHING SET ON TRAY

A combined set of accurate Steel and Brass weights that are housed in a sturdy blue mounted tray.



NEW
P543
\$68
each



BODY MODEL, HALF CLEARED

Build your own anatomy model of the half-cleared human body! 25 detachable parts. Size 33cm.

NEW
26085
\$92.50
each



MICRO SOUND LEVEL METER

With a range of 40 - 130dB, this little meter is ideal for all your science class experiments and environmental, safety and sound system testing. It has a fast response time for transient measurements and is A-weighted for the frequency range of human hearing. Compact size. 9V battery included.

NEW P586
\$55
each



ECONOMY CATIII MULTIMETER WITH DATA HOLD

This Cat III multimeter is perfect for the student who wants an inexpensive meter that features a number of practical functions. The three input jacks and enclosed test leads allow you to measure AC and DC voltage, DC current, resistance and continuity.

NEW P894
\$17.50
each



EYEBALL ANATOMY MODEL

Assemble the 32 parts and learn about the anatomy of the human eyeball. Quality model. Size: 38cm tall with stand and illustrated assembly guide.

NEW 26054
\$40.50
each



RESPIRATORY SYSTEM MODEL

Build a human anatomy model of the respiratory system! This exceptionally detailed, 20cm model contains 21 detachable, hand-painted education-quality organs and parts.

NEW 26082
\$54
each

CLOUD BOTTLE

Amaze students with this easy to perform cloud demonstration. Add a few drops of water inside the bottle, add pressure. When you lift the lid a cloud will form inside the bottle. A thermometer strip records the temperature changes during the demonstration. 26cm tall.

NEW P534
\$27
each



AUSTRALIAN EARTH SCIENCES BUNDLE BY TESEP

A safe, large 29pc rock set especially designed for Australian schools as part of the Teacher Earth Science Education Programme (TESEP). Includes one free registration to a TESEP professional development workshop. One of the best rock kits available anywhere in the world and assembled by a dedicated team of TESEP geoscientists.

PLATE TECTONICS POSTER

Shows a 3D Earth cross section with Australia-relevant plate tectonics highlighting man's utilization of Earth resources (cities, mines, energy networks), geo-hazards and water/rock cycles.

NEW T339
\$335
bundle



EDIBLE INSECT PACK - SET OF 8

Experience bush tucker in your classroom! Insects could be a game changer in the race to combat food insecurity and feed a fast growing population. Two billion people (more than a quarter of the world's population) already eat insects as part of their regular diet. Insects are a great source of nutrients like protein, they are abundant and have less of a carbon footprint to produce.

Check-out our BRAND NEW range of edible insects that your students can explore and sample as part of the 2021 National Science Week theme, Food Different by Design. The theme covers a range of areas in food production with a big emphasis on sustainable agriculture such as edible insect farming

NEW B351
\$90
each



LAB MANAGER

POWER SUPPLY

For banana plugs and alligator clips, with front mounted on/off switch, overload trip.

Output Range/Max : 2-12V AC, 2-12V DC/5A

BEST SELLER
BEST VALUE

2633001
\$135
each



WASH BOTTLE, EMPTY LABEL, 500ML

Chemical wash bottle with blank labels, 500ml capacity. Wide Mouth for easy filling. Self venting design to eliminate leaks & dripping. Made of low density polyethylene (LDPE).

L1025
\$8.20
each



WASH BOTTLE, LABELLED DISTILLED WATER, 500ML

Easy to read labeling, including chemical information and safety warnings (4 colors). Self venting design. 500ml capacity. Made of low density polyethylene. Color coded screw cap for easy identification (4 colors).

L1021
\$9.50
each



SAFETY GLASSES, LABPRO

Vented side arms. Large hard polycarbonate lens & arms. Hard scratch resistant coated

3595C
\$5.90
each



SAFETY GLASSES, ARC VISION

Made from hard coated polycarbonate lens and UV treated.

900070
\$4.50
each



SAFETY GLASSES RACK

Stores and dispenses safety glasses easily. Delivered 'flat packed', requires assembly. Australian made.

SGR001
\$95
each



SILICONE BENCH MAT, PACK 10

Economical and ideal for all your lab work. 30x40cm size, 1mm thickness, non-stick, non-porous and non-toxic surface. Simply wipe or rinse clean. Heatproof to 220C.

Not suitable as a cutting mat.

NEW

SBM10
\$99
pk/10



T268
\$29
each

BEST VALUE

WAS \$39

DIGITAL, STEM THERMOMETER

- Pocket digital
- Range: -50°/200°C, ±0.5°C
- Dimension: 205mm (H), 150mm SS probe



pH CHECKER

BEST SELLER

- Pocket-size digital, pH Checker
- pH/ Resolution/Accuracy: 0 to 14 pH, 0.1pH, +/-0.2pH

HI98103
\$85
each



* flask not included

DIGITAL BENCH BALANCE

BEST SELLER

BEST VALUE

SPECIAL \$3

1000 X 0.01G

This precision 1000 x 0.01g balance comes supplied with a wind shield and a built-in bubble level to provide maximum accuracy. Powered by 4 x AA batteries (not included) or mains adaptor (included).

- Auto power-off after 60 sec
- Automatic calibration
- Backlit LCD
- Tare and counting function
- Mains powered

QM7264
\$175
each



MULTI-TEST pH METER

Comes complete with relevant electrodes, batteries and operational instructions.

pH Range/Resolution: 1 to 15 pH, 0.01 pH
EC Range/Resolution: 0-2000 µS, 2- 20mS / 0.1 µS, 1 µS, 0.01mS
TDS Range/Resolution: 0-1000 ppm, .1-10 ppt / 0.1ppm, 1ppm, 0.01ppt
Salinity Range/Resolution: 0-10 ppt, 0.10 ppt
Temperature Range/Resolution: 0 to 60°C, 0.1°C

ELITEPCTS
\$395
each



MULTI-TEST METER

- Sound/Light level/ Temperature & Humidity meter
- Ideal for all your classroom applications

QM1594
\$139
each



DRAINING RACK, BENCH/WALL MOUNTED, 32 PLACE

Sits on the bench or mount it on a wall. Size is 360x500mm, 32 pegs (70mm long). Nylon coated wire.

DR10
\$122
each



NEW

BUNSEN BURNER

STANDARD LPG OR NATURAL GAS

Base/tube diameter: 85 x 18mm, 130mm (H)

BEST SELLER

MA1230L

\$15.60

LPG

MA1230N

\$15.60

NATURAL GAS



L808

\$11

each

L80810

\$98

pk/10

NEOPRENE TUBING

- Non-slip strong tubing with reinforced ends
- Safe and secure connection of bunsen burners to gas taps
- Also suitable for condensers
- Length 900mm

BURETTES

GLASS, PTFE stopcock, schellbach. 50ml. Class A

UNBREAKABLE, CLEAR ACRYLIC, ptfе stopcock 50ml

ROTAFLOW, GLASS 50ml, class A



86957

\$38

each



811335

\$25

each



G1903GP

\$38

each

86957

811335

G1903GP

GAUZE MATS

50201

\$23

pk/10

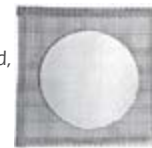


Wire, galvanised, 15cm square, plain

502101

\$29

pk/10



Wire, galvanised, 15cm square, ceramic centre*
* asbestos-free, certification included

FIRST AID KIT 53 PIECE

Ideal for the smaller sized classrooms. This kit contains sticky plasters, bandages, safety pins, anti-bacterial solution, scissors and much more. All packed in a super durable, red high visibility nylon storage case.

ST3972

\$21

each



FLAME TEST BOTTLE, 50ML

Show cation flame colours quickly - spray low concentration of solution directly into flame using these economical flame test bottle. Bottle top nozzles available separately.

NO MESS! NO CONTAMINATION!

FTB001

\$28.50

pk/10

FTB003

\$22.50

pk/10

Nozzle only



DIGITAL STOPWATCH

HEAVY DUTY

- 0.01 sec timing, up to 30min
- 6 digits LED display
- Runs on 1 x AA Battery



XC0270

\$11.90

each

BEST SELLER

Made in Australia

STOPWATCH / COMPASS TRAY

- Holds stopwatches, map readers and compasses
- 15 slots
- Easy storage



SW/T001

\$55.80

each

WATER BATH - 14L

This simple, general purpose water bath is designed to rest on and be heated by an IEC Hot Plate or Hot Plate/Stirrer (not included). Even heating may be accomplished by manual stirring or by using a magnetic spin bar in conjunction with a magnetic stirrer/hotplate.

- Stainless steel bath for superior durability & high thermal efficiency
 - Thermometer (not included) required to monitor temperature if a temperature controller is not used
 - Can also be used as a dry oven and will form an important part of IEC's new Gas Chromatograph
- Contact us for IEC hot plate/stirrer or thermometer.

Internal Dimension : 260 x 180 x 125mm (L x W x H)



CH4240-001

\$230

each

NOTE: HOTPLATE NOT INCLUDED

TEMPERATURE CONTROLLER

This thermostat fits over the edge of the IEC Water Bath to control the hot plate. This ensures that the water temperature in the water bath is maintained.



CH4240-101

\$172

each



LABCOATS

BRAND NEW LABCOATS FOR USED COAT PRICES!

BEST SELLER

Specify Colour When Ordering

- No Min Order Quantities!

Material:

Cotton Polyester / Press Button Studs / 3 pockets

White

XX-Small	LCNXXS
X-Small	LCNXS
Small	LCNS
Medium	LCNM
Large	LCNL
X-Large	LCNXL

was \$39
\$26
each

Navy Blue

Small	LCNSB
Medium	LCNMB
Large	LCNLB
X-Large	LCNXLB

was \$39
\$29
each

LAB COAT RACK - SINGLE RAIL

Portable single rail rack for keeping your lab coats organised and crease-free. Mounted on sturdy rubber wheels. Chrome-finish.

Size: 1280 x 580 x 1420-1670mm (W x D x H)

- Holds up to 80 coats
- You never have to fold your coats again!
- Easily store your coats
- Count & sort
- Wheel them around easily
- Hang them up to dry



L500
\$220
each

Adjustable height:
142-167cm

GLOBAL HARMONIZATION STANDARD (GHS) SAFETY LABELS

25 X 25mm - 100 LABELS/ROLL

CODE	DESCRIPTION	UNIT	PRICE \$
GHS01	Explosive	each	9.90
GHS02	Flammable	each	9.90
GHS03	Oxidizing	each	9.90
GHS04	Gases Under Pressure	each	9.90
GHS05	Acute Toxicity	each	9.90
GHS06	Health Hazard	each	9.90
GHS07	Corrosive	each	9.90
GHS08	Chronic Health Hazard	each	9.90
GHS09	Environmental	each	9.90



50 X 50mm - 100 LABELS/ROLL

CODE	DESCRIPTION	UNIT	PRICE \$
GHS10	Explosive	each	11.50
GHS11	Flammable	each	11.50
GHS12	Oxidizing	each	11.50
GHS13	Gases Under Pressure	each	11.50
GHS14	Acute Toxicity	each	11.50
GHS15	Health Hazard	each	11.50
GHS16	Corrosive	each	11.50
GHS17	Chronic Health Hazard	each	11.50
GHS18	Environmental	each	11.50

100 X 100mm - 100 LABELS/ROLL

CODE	DESCRIPTION	UNIT	PRICE \$
GHS20	Explosive	each	14.70
GHS21	Flammable	each	14.70
GHS22	Oxidizing	each	14.70
GHS23	Gases Under Pressure	each	14.70
GHS24	Acute Toxicity	each	14.70
GHS25	Health Hazard	each	14.70
GHS26	Corrosive	each	14.70
GHS27	Chronic Health Hazard	each	14.70
GHS28	Environmental	each	14.70

BOTTLES - STULL DROPPING, WITH STULL CAP

CLEAR, POLYETHYLENE			
VOLUME	QTY	CODE	PRICE \$
125ml	pk/50	DB125S	64.00
50ml	pk/50	DB50S	54.00
Stull cap only, 125ml & 50ml	each	SC002	0.80
15ml	pk/10	DB1510	16.00
15ml	pk/50	DB1550	74.00



STULL DROPPING BOTTLE STORAGE TRAYS

FOR 6 BOTTLES		
MODEL	CODE	PRICE \$
50/125 ml	TSB506	16.00
FOR 12 BOTTLES		
50/125 ml	TSB5012	19.50



*Stull bottles not included



Made in Australia

DABCO - UNITRAY

Ideal for storing dropping bottles.

TYPE	CODE	PRICE \$
With insert	DUN102	6.50
No insert	DUN103	5.00

BOTTLES

DROPPING, SCREW CAP

FROM
\$1.10
each

CLEAR GLASS, WITH DROPPER		
VOL	CODE	PRICE \$
25ml	BS250	1.40
50ml	BS500	1.50
100ml	BS100	1.60

AMBER GLASS, WITH DROPPER		
VOL	CODE	PRICE \$
25ml	BS250A	1.40
50ml	BS500A	1.50
100ml	BS100A	1.60

SPARE DROPPER, FOR DROPPING BOTTLE		
VOL	CODE	PRICE \$
25ml	BS251	0.90
50ml	BS501	0.90
100ml	BS601	1.10

ELECTRIC HEATING MANTLE



- GE327701**
\$240 each
for 100ml flask
- GE327801**
\$240 each
for 250ml flask
- GE327901**
\$250 each
for 500ml flask
- GE328001**
\$265 each
for 1000ml flask

SINGLE HOT PLATE

Portable stainless steel electric hotplate. Sealed single-plate design. Designed to meet Australian Standards.

- Power : 1500W
- Stainless steel finish with diecast heating element
- Thermostat Control
- Automatic Safety Shut-off with Thermal Fuse
- Power Indicator Light

Plate : 185mm diameter
Overall : 460 x 260 x 65mm (L x W x H)



HP1
\$63 each
BEST SELLER

VACUUM PUMP WITH PRESSURE GAUGE

The pump delivers 120mbar Ultimate Vacuum and 18 l/min flow rate. This pump is ideal for schools with no maintenance and no oil, simply plug and play.



L673
\$515 each

GLASS WASTE BIN WITH LID AND LINER

Disposable. 47 litres. Ideal for school science labs for the safe waste collection of broken glass. This box is printed with broken glass warnings and hazard symbols to help reduce potential workplace injuries from broken glass being put in general waste. Delivered flat, is easily assembled with plastic liner and flip top lid that can be removed when full to seal down box for safe transport to recycling.

77 (H) x 32 (W) x 31 (D)cm



- L421**
\$22 each
- L4211**
\$99 pk/5

omega

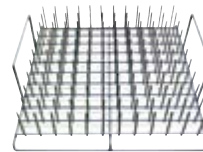
L101W
\$670 each



DISHWASHER - BENCH TOP

Compact design features the electronic control panel at the top of the door for easy selections. Comes with stainless steel interior. Size: 44 x 55 x 50cm (L x W x H)

- Connect directly to your tap
- Large 6 place capacity (42 pieces)
- 6 wash program options
- Residual hot air drying
- Three-stage filtration cycle



CDCF6TT
\$295 each

DISHWASHER - TEST TUBE RACK

Holds up to 132 test tubes

TOP QUALITY



4091
\$545 each

SENIOR TROLLEY

- 1 x Senior Trolley
- 1032 x 508 x 960mm



3424
\$436 each

JUNIOR TROLLEY

- 1 x Junior Trolley
- 854 x 473 x 960mm

BENCH MATS

CEMENT SHEET

- Asbestos-free
- Washable

DIMENSIONS

Small : 300 x 300 x 5mm (W x H x D)

Big : 400 x 400 x 5mm (W x H x D)



BM300
\$10 each
300mm

BM400
\$15 each
400mm

MELAMINE-COATED

- Washable
- Easy Cleaning
- Unbreakable
- Non Scratch
- Non Absorbent

DIMENSIONS

Small : 300 x 300 x 15mm (W x H x D)

Big : 400 x 400 x 15mm (W x H x D)



MBM300
\$10 each
300mm

MBM400
\$15 each
400mm

SCHOTT DURAN® GLASSWARE 2021

- The complete range is now available from Haines Educational
- The following items will be in stock at exceptional prices

CHECK OUT THE **NEW** YOUTILITY BOTTLE RANGE



SAVE!!

**BUY IN
PACK
LOTS &
SAVE!**



SCHOTT DURAN® Beaker Low form with graduation and spout

ITEM CODE	CAPACITY	UNITS	PRICE
D101	25ml	Each	\$6.80
D1011		10 / pkt	\$59.50
D102	50ml	Each	\$7.10
D1021		10 / pkt	\$62.50
D103	100ml	Each	\$6.80
D1031		10 / pkt	\$59.50
D104	150ml	Each	\$6.80
D1041		10 / pkt	\$67.30
D105	250ml	Each	\$7.80
D1051		10 / pkt	\$67.50
D106	400ml	Each	\$8.60
D1061		10 / pkt	\$77.50
D107	600ml	Each	\$9.70
D1071		10 / pkt	\$86.30
D108	800ml	Each	\$13.90
D1081		10 / pkt	\$125.10
D109	1000ml	Each	\$15.90
D1091		10 / pkt	\$138.50
D110	2000ml	Each	\$29.30
D1101		10 / pkt	\$260.50
D111	3000ml	Each	\$46.50
D1111		4 / pkt	\$163.50
D112	5000ml	Each	\$85.10



SCHOTT DURAN® Erlenmeyer flask Narrow neck, with graduation



ITEM CODE	CAPACITY	UNITS	PRICE
D201	50ml	Each	\$8.60
D2011		10 / pkt	\$77.40
D202	100ml	Each	\$8.20
D2021		10 / pkt	\$73.80
D203	250ml	Each	\$8.60
D2031		10 / pkt	\$77.40
D204	500ml	Each	\$10.50
D2041		10 / pkt	\$94.50
D205	1000ml	Each	\$18.20
D2051		10 / pkt	\$164.00
D206	2000ml	Each	\$29.50



SCHOTT DURAN® Erlenmeyer flask Wide neck, with graduation



ITEM CODE	CAPACITY	UNITS	PRICE
D301	50ml	Each	\$8.70
D3011		10 / pkt	\$78.30
D302	100ml	Each	\$8.60
D3021		10 / pkt	\$77.40
D303	250ml	Each	\$9.20
D3031		10 / pkt	\$82.80
D304	500ml	Each	\$11.00
D3041		10 / pkt	\$99.00
D305	1000ml	Each	\$18.10
D3051		10 / pkt	\$162.90
D306	2000ml	Each	\$31.50
D3061		10 / pkt	\$283.50

A new generation lab bottle by Schott Duran®...

Specially shaped gripping zones on both sides of the bottle enable easier and safer handling.

The slimmer YOUTILITY bottle shape allows a more optimal use of limited space on benches, shelves and autoclaves.

With the new YOUTILITY bottle thread opening or closing the bottle is significantly faster. The thread is fully compatible with DIN GL 45 closures and other accessories.



SCHOTT DURAN® YOUTILITY bottle, clear, graduated with cyan screw-cap and pouring ring (PP)

ITEM CODE	CAPACITY	UNITS	PRICE
D601	125ml	Each	\$11.90
D6011		4 / pkt	\$39.40
D602	250ml	Each	\$11.50
D6021		4 / pkt	\$43.80
D603	500ml	Each	\$13.20
D6031		4 / pkt	\$49.80
D604	1000ml	Each	\$18.90
D6041		4 / pkt	\$68.10



SCHOTT DURAN® Laboratory Bottle, clear, graduated with screw-cap and pouring ring (PP)

ITEM CODE	CAPACITY	UNITS	PRICE
D401	50ml	Each	\$11.00
D4011		10 / pkt	\$95.00
D402	100ml	Each	\$9.80
D4021		10 / pkt	\$89.00
D403	250ml	Each	\$11.30
D4031		10 / pkt	\$99.50
D404	500ml	Each	\$12.50
D4041		10 / pkt	\$111.20
D405	1000ml	Each	\$18.20
D4051		10 / pkt	\$161.00
D406	2000ml	Each	\$36.50
D4061		10 / pkt	\$325.30
D407	5000ml	Each	\$215.80



SCHOTT DURAN® Laboratory Glass Bottle, Amber with screw cap and pouring ring (PP)

ITEM CODE	CAPACITY	UNITS	PRICE
D501	100ml	Each	\$54.50
D5011		10 / pkt	\$472.00
D502	250ml	Each	\$62.30
D5021		10 / pkt	\$536.20
D503	500ml	Each	\$67.30
D5031		10 / pkt	\$580.50
D504	1000ml	Each	\$87.80
D5041		10 / pkt	\$774.60
D505	2000ml	Each	\$126.00
D5051		10 / pkt	\$1084.60

SCHOTT DURAN® Spares

ITEM CODE	CAPACITY	UNITS	PRICE
LB525	Cap, lab bottle, blue, GL 45	Each	\$3.80
LB520	Pouring ring, blue, GL 45, pkt 10	10 / pkt	\$14.90

ADAM BALANCES

CB COMPACT RANGE

BEST SELLER

The CB is a compact portable balance which is ideally suited for a variety of uses and applications. Its compact size facilitates effortless storage and transportation between classrooms.



CODE	ACCURACY	UNIT	PRICE \$
CB501	500g x 0.1g	each	100.80
CB1001	1000g x 0.1g	each	120.60
CB3000	3000g x 1g	each	100.80
CBADAPTOR	6vDC 200mA	each	35.60

Pan size:
130mm
Dimension:
45 x 160 x 205mm (H x W x D)

Adam balances are heavy duty finely engineered weighing units which offer exceptional value for money. Most come with 2 years warranty*.

HIGHLAND RANGE

With built in applications for parts counting, percentage weighing and totalization / accumulation, Highland balances are packed with useful features.



CODE	DESCRIPTION	UNIT	PRICE \$
HCB120	120g x 0.001g	each	545
HCB302	300g x 0.01g	each	490
HCB602H	600g x 0.01g	each	525
HCB1002	1000g x 0.01g	each	580
HCB2202	2200 x 0.01g	each	715
HCB3001	3000g x 0.1g	each	490
HCB6001	6000g x 0.1g	each	545

Pan size:
120mm
Draft shield:
Round 132 x 90mm high
Dimension:
80 x 170 x 245mm (H x W x D)

DUNE SERIES RANGE

The Dune series offers all of the necessary features for quick and easy weighing. Compact and easy to use, the Dune offers basic weighing at an unbeatable value! Streamlined design for basic weighing in the lab, classroom or field.



CODE	ACCURACY	UNIT	PRICE \$
DCT201	200g x 0.1g	each	110.50
DCT2000	2000g x 1g	each	110.50
DCT5000	5000g x 2g	each	110.50
DCT302	300g x 0.01g	each	270
DCT601	600g x 0.1g	each	160
DCT2001	2000g x 0.1g	each	205.60

Pan size:
145 x 145mm
Dimension:
40 x 208 x 147mm (H x W x D)

LUNA RANGE

PRECISION RANGE

Pan size: 120mm
Draft shield: Round 180mm x 110mm
Dimension: 344 x 220 x 340mm (H x W x D)



EXTERNAL CALIBRATION

CODE	DESCRIPTION	UNIT	PRICE \$
LPB 223e	220g x 0.001g	each	1,200
LPB 423e	420g x 0.001g	each	1,300
LPB 623e	620g x 0.001g	each	1,700

INTERNAL CALIBRATION

CODE	DESCRIPTION	UNIT	PRICE \$
LPB 223i	220g x 0.001g	each	1,400
LPB 423i	420g x 0.001g	each	1,500
LPB 623i	620g x 0.001g	each	1,900

COT CORE SERIES RANGE

The COT Core series is the best choice for simple operation and economy.



CODE	ACCURACY	UNIT	PRICE \$
CQT202	200g x 0.01g	each	330
CQT251	250g x 0.1g	each	185
CQT601	600g x 0.1g	each	215
CQT1501	1500g x 0.1g	each	305
CQT2601	2600g x 0.1g	each	350
CQT5000	5000g x 1g	each	205

Pan size:
120mm
Draft shield:
Round 130 x 90mm high
Dimension:
86 x 173 x 255mm (H x W x D)

ADAM

CALIBRATION WEIGHTS

Balances require calibration regularly to ensure accuracy. Adam calibration weights are accurate and inexpensive. The perfect partner for any balance in your lab. Stainless steel, OIML Class F1 weights.

CODE	DESCRIPTION	UNIT	PRICE \$
F1CN01	1g	each	50
F1CN10	10g	each	55
F1CN20	20g	each	60
F1CN50	50g	each	70
F1CN100	100g	each	80
F1CN200	200g	each	95
F1CN500	500g	each	135
F1CN1K	1000g	each	205
F1CN2K	2000g	each	250



DISPOSABLE POLYSTYRENE WEIGH TRAYS

CODE	DESCRIPTION	UNIT	PRICE \$
WT21004	80 X 80mm	pk/1000	148.00
WT2250	80 X 80mm	pk/250	40.00
WT44	44 X 44mm	pk/250	20.00



TUBULAR SPRING BALANCE, PREMIUM

ACRYLIC, STAINLESS STEEL PARTS

Longer scale enables easier reading and improved resolution.

DIMENSIONS

270 x 25mm (L x Ø)

CODE	DESCRIPTION	UNIT	PRICE \$
P300	10g / 0.1N	each	16.00
P310	20g / 0.2N	each	16.00
P320	100g / 1N	each	16.00
P330	200g / 2N	each	16.00
P340	250g / 2.5N	each	16.00
P350	500g / 5N	each	16.00
P360	1kg / 10N	each	16.00
P370	2kg / 20N	each	16.00
P380	5kg / 50N	each	16.00
P385	10kg / 100N	each	16.00
P395	Complete set	set/10	152.00



NEW

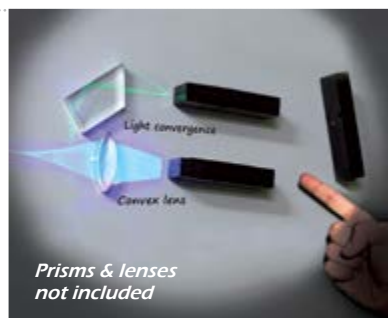
- LONGER LASTING
- WIDE RANGE OF CAPACITIES

PRICE

\$16
each

PRICE

\$152
set/10



Prisms & lenses not included



LIGHT SOURCE COLOURED, SET/3

LEARN ABOUT THE PROPERTIES OF LIGHT

This set of 3 coloured lights (red, green blue) is a simple and effective way to explore light and optics.

Attach to a whiteboard or use on a table. Battery operated (included). Notes and suggested experiments included.

Size: 20 x 35 x 20mm (per block)

Note: Prisms & lenses set (P576) recommended

P607

\$29

set/3

Set/3

P6075

\$130

bundle

Set/3 x Pk/5

HEAT ABSORPTION COMPARATOR

A great little device cleverly designed to demonstrate heat absorption and radiation. Use 12 V to activate the globe (supplied) and tabulate and graph the results.

HAC002

\$75

each



MAGNETISM DEMONSTRATOR, 3D, WITH MAGNET

3D form with oil. Produces a dramatic demonstration of magnetic fields. Includes 1 cylindrical magnet. Designed for use with overhead projector. Size: 75 x 75 x 75mm acrylic block

2066001

\$65

each



HALF LIFE ANALOGUE

Perfectly safe way to study the topic of radioactivity. Practicals are difficult to organise because of the hazardous nature of the topic, but this apparatus offers students the opportunity to obtain realistic results. The student set contains ten trays and 500 small plastic cubes. The cubes have one face identified and represent radioactive nuclei which have "decayed" when this face is uppermost.

Ten groups shake their set of nuclei and roll them out onto the bench. For each throw the decayed nuclei are counted and removed from the set. Excellent results for an exponential decay curve are obtained with increased awareness of the link between activity and the number of nuclei present.

P619

\$85

each



NEW



NEW

P579

\$89

each

BELL JAR WITH BUZZER, BATTERY OPERATED

Without air or matter, sound waves cannot travel and therefore cannot be heard. This bell jar effectively demonstrates this concept using a battery-operated buzzer housed inside an acrylic tube. When the buzzer is placed beneath the jar and a vacuum seal is created in the chamber, students will observe a total absence of sound. Once air is returned to the chamber, the sound of the buzzer can be heard once more. Activity requires a vacuum pump, not included. Height 14cm, 10 cm Ø



P252

\$59.50

each

BICYCLE DYNAMO ASSEMBLY

For showing slow AC on an oscilloscope or meter or for demonstrating the use of a dynamo in lighting a lamp.

This apparatus has a cycle dynamo mounted on a base. Two 4 mm socket terminals are provided for the dynamo output.



P009

\$99

each

DEMO MAGNETIC LINE OF FORCE

This two part unit is ideal for showing the lines of force surrounding both U shape and bar magnets. Comes as a pair. Size: Bar magnet 17cm Ø, 20cm high. U Magnet 21cm high x 17 cm wide

DYNAMIC TRACK, STAND AND RAMP

Complete with height adjustable support and run off ramp to bridge the gap between track and floor when required. Made of robust materials.

Specifications:
Ramp size: 30cm (W) x 120cm (L)
Maximum height: 65cm

PH003

\$155
each

EXTRA
LARGE



P132

\$295
per set



DEMOUNTABLE TRANSFORMER SET

Easily conduct activities to illustrate electromagnetism and induction with this set of dissectible coils and cores. Kit consists of a plastic base, a laminated iron core, mounting fixtures and six coils protected in a heat resistant film. Also useful in basic transformer experiments.

Coils : 200, 400, 600, 800, 1600, 3200

Includes comprehensive instructions and activity guide.



4880

\$39
set/500g



4980

\$70
set/1000g

9 Masses x 50g
1 Hanger x 50g
Total = 500g

9 Masses x 100g
1 Hanger x 100g
Total = 1000g

SLOTTED MASSES, STAINLESS STEEL

- High quality stainless steel
- Can not tarnish
- Exceptional weight stability
- Extra strong hook and weights
- Spare hangers & slotted weights available

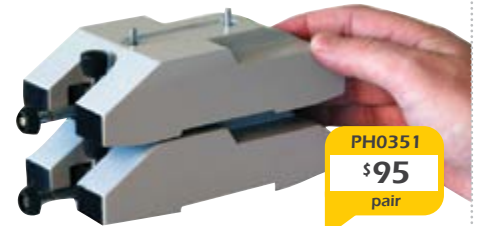
Best Value

DYNAMIC CART, METAL PERFECT FOR INCLINED PLANE & BENCHTOP EXPERIMENTS

- Modern and compact, designed with robust metal bodies and wheels
- Low friction wheel bearings with individual spring suspension

One end of the metal body carries an integral spring plunger/trigger system for explosion experiments, whilst the other end has a clamping screw for attaching ticker tape. Includes velcro pads for non elastic collisions and locating pins to permit secure stacking of trolleys.

Size: 150 x 78 x 50mm, 600g per cart



PH0351

\$95
pair

STACKABLE



P411

\$55
per set

LESLIE'S CUBE TIN

Tin plate box with 130mm sides. The vertical faces of the box are blackened, roughened, varnished and polished respectively. The top opening is fitted with a stopper with a hole for a thermometer (not supplied)



P149

\$39
per set

ICE MELTING PLATES

A great demonstration for conductivity and heat transfer. The melting plates display quizzical properties when an ice cube melts on each plate. The aluminum plate that is cold to the touch melts the ice faster than the plastic foam plate, even though both have equivalent temperatures.

- Includes instruction manual
- 1x each aluminum & foam plate (9 x 9 x 1cm)



P927

\$28.60
per set

RADIATION CANS, SET/3

Not all colours are created equal. Investigate how colour can influence absorbing and radiating energy. The cans are finished with black, white, and silver exteriors, so students can easily determine the effect of surface colour on heat transfer. Set of three 500mL metal cans with stoppers to accommodate thermometer (not included). Size: 23cm tall.



P150

\$36
per set

FIRE SYRINGE DEMO

Safely demonstrate the principle of the Diesel engine ignition, where heat is produced when a gas is rapidly compressed. When the plunger in the transparent cylinder is rapidly pushed down over a piece of cotton or paper towel, ignition occurs.

Size: 22cm tall

Best Value

ELECTRIC MOTOR KIT, SET/6

The kit comprises all the part required to build 6 model motors.

Includes:

- 12x magnets
- 6x armatures
- 6x mild steel yokes
- 6x support bases
- 6x shafts
- 24x rivets
- 12x split pins
- 1x reel of 26SWG PVC tinned copper wire
- 2x reels of cello tape
- 300mm rubber tubing of 3mm bore



P151

\$119
set/6

PH724

\$55
pair



TUNING FORK PAIR SET/2, STEEL

What happens when 2 mounted tuning forks sound at the same / different frequencies?

CATHODE RAY TUBES

Requires Induction Coil & Power Supply. Instructions included.



P840

\$81.50
each

Electrostatic Deflection



EM013301

\$298
each

INDUCTION COIL, 30MM SPARK

To produce high voltage alternating current or pulses of high voltage current from a low voltage direct current source. Suitable for use with gas-filled discharge tubes, vacuum tubes and for general laboratory work. Requires 6-12V power source.



P842

\$81.50
each

Maltese Cross



P841

\$81.50
each

Magnetic Effect



P843

\$81.50
each

Paddle Wheel

0090001

\$99.80
each



SOLENOID

AIR CORED, 660 TURNS

Formed on a strong moulded plastic bobbin, it is used in several experiments or for any time a magnetic field is required of known field strength.

It contains 660 turns of copper wire and can carry about 5 amps maximum current. The wire terminates to 4mm socket head terminals.

1884001

\$775
each



GEIGER COUNTER - DIGITAL

- To detect and count high energy Alpha particles, Beta particles and Gamma rays
- To count either continuously or over preset periods of 10sec, 60sec or 100sec.
- To measure Rate of counts per second or Rate of counts per minute.

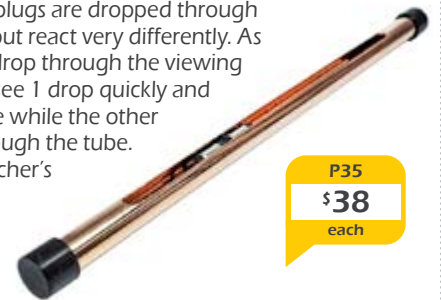
Comes with inbuilt GM tube and LCD display is powered by 3x 'AA' batteries. Socket provided for standard 240/12V.AC.

Option: Plug Pak can be used to run the unit.

LENZ LAW APPARATUS

The Lenz Law Apparatus allows you to demonstrate electric and magnetic forces. 2 identical-looking plugs are dropped through the copper pipe, but react very differently. As you watch them drop through the viewing window you will see 1 drop quickly and without resistance while the other moves slowly through the tube.

Comes with a Teacher's Guide



P35

\$38
each

RADIO ACTIVE SOURCES

- Half lives displayed on individual disc sources
- Isotopes are exempt from individual licensing and require no special handling/storage or disposal.

ITEM	CODE	PRICE \$
Polonium 210	1093001	250
Stronium 90	1093002	250
Cobalt 60	1093003	250
Set/3 - Po, St, Co	1093004	590



New Low Price

CLOUD CHAMBER

- Demonstrate the cloud tracks formed by ionizing radiation.
- The chamber is constructed of clear plastic and has a tight fitting, clear cover for unimpaird vision.

JUPCC

\$31
each



Best Seller

PS351
\$69.90
per set



ELECTRICITY KIT, ECONOMY

A complete classroom set of basic electrical components.

Includes:

- 10x lamp holders, 10x bulbs
- 1x buzzer, 1x electric motor
- 5x switch, 3x battery holder
- 10x alligator leads



P109
\$55
per set

SPECIMEN DENSITY, SET/9

Cubes for density investigation. Stored in a wooden box. Size: 25mm cube

Includes:

Brass / iron / copper / aluminium / PVC / hardwood / softwood / nylon / acrylic

New Design

PO003
\$395
each



POWER LINES TRANSMISSION MODEL

Show safely and effectively why electricity is stepped up to 1,000s of volts when transported over large distances. Measure all currents and voltages in the power station, transmission lines and home. Compare the electricity loss (with step up) to the electricity loss (no step up).

Includes teacher's notes and instructions.

GUINEA & FEATHER

Free fall tube classical demo

Drop a coin and a feather in a vacuum and see how fast they fall.

Length: 1m

Note: Requires a vacuum pump, not included



35050
\$155
each

Best Seller

PH019
\$69
each



DEMONSTRATION METER, ECONOMY

Simple galvanometer. Use it to demonstrate deflection due to small currents.

Housed in a transparent wooden box to easily see key features.

Size: 8 x 10 x 19cm (L X W X H)

LOOP THE LOOP

PH054
\$68
each

LARGE

Demonstrate transformation of potential into kinetic energy with this large size model for the whole class to see.

Size: 50cm high



HAND GENERATOR

Hand operated, housed in clear tough plastic case. Mounted lamp on the end can be used as a flash light.

Can be utilised with almost any experiment requiring up to 12V DC current. Use binding post to connect outside electrical circuit.

PH1229HG
\$25
each



LIGHT GUIDE

P0587
\$15
each

An "S" shaped acrylic bar used to demonstrate total internal reflection. Length: 22cm

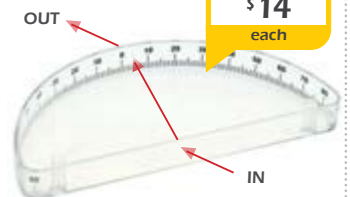


REFRACTION TANK

Acrylic hollow tank with graduations. Ideal for refraction, reflection and wave demonstrations.

Size: 20cm diameter

PH0585D
\$14
each



SPECTROMETER, ENGLISH PATTERN

Comprised of a cast base with an integral fixed pillar for the collimator support and a swinging telescopic arm.



338000
\$525
each

HAND BOILER

Glass hand boiler demonstrates Charles' Law. Item contains ethyl alcohol and is flammable, to be used under strict adult supervision.

G451
\$16
each



ATOM ACTIVITY MODEL

So easy for students to now build their own atoms. Add/remove neutrons and protons to the nucleus. Peg the required number of electrons in the appropriate shells. Can be used on the overhead projector for easy class demonstration. Cheap enough for class sets. Model 15cm wide.



PR003
\$39
set

NOMENCLATURE CARDS

Using this set of 140 + 4 blank write and wipe magnetic cards representing the most common cations and anions including polyatomic ions and multiple valency elements students can investigate not only the sometimes perplexing naming of compounds but the balancing of equations.



B202
\$89
set

DIGITAL COLORIMETER

This Colorimeter is a high quality student Colorimeter for the measuring of concentrations of chemical solutions. The LCD display can provide either 'Transmission' or 'Absorption' measurements. Supplied complete with 6x cuvettes and 4x test tubes for samples, with selectable 0-4V or 0-5V analogue output signal for logging software.



1003001
\$420
each

FERRO FLUID

Ferro Fluid is a novel application of nano technology and is now used in many commercial applications including computer hard drives, audio speakers, bio-medical procedures and detection of micro-faults in critical steel components. Now you can use Ferro Fluid to demonstrate and discuss magnetic behaviour in your classroom.

Ferro Fluid is a colloidal suspension of nano scale magnetic particles in a liquid carrier. The particles average about 10nm in size and are coated with a dispersing agent (surfactant) to prevent agglomeration.



NEW

G675
\$55.30
50mL



MOLECULAR CLASSROOM DEMO SET

SET/99, EXTRA LARGE

C200
\$165
set/99

ELEMENT	QTY	FACE	COLOUR
Hydrogen	40	1	White
Carbon	20	4	Black
	10	3	Black
	4	2	Black
Nitrogen	1	4	Blue
	3	3	Blue
	4	2	Blue
Oxygen	10	2	Red
	6	1	Red

ELEMENT	QTY	FACE	COLOUR
Chlorine	2	1	Green
Fluorine	2	1	Light Blue
Bromine	2	1	Brown

LINKS			
Double Bonds	16	65mm length	
Turning Bonds	6	70mm length	
Small Bonds	120	16mm length	
Big Connector	48	65mm length	

SENIOR ORGANIC / INORGANIC SET

SET/230



C190
\$155
set/66

ELEMENT	QTY	COLOUR
Metal	42	Grey
Oxygen	72	Red
Sulphur	12	Yellow
Nitrogen	15	Blue
Carbon	45	Black
Phosphorus	18	Purple
Hydrogen	36	White

LINKS		
Medium	170	Grey
Long Flex.	100	Grey

SENIOR ORGANIC SET

SET/66



C195
\$44
set/66

ELEMENT	QTY	COLOUR
Carbon	20	Black
Oxygen	6	Red
Hydrogen	22	White
Nitrogen	2	Blue
Sulphur	2	Yellow
Phosphorus	1	Purple
Halogen Cl	6	Green
Halogen F	6	Green
Metal	1	Grey

LINKS		
Medium	28	Grey
Long Flex.	12	Grey
Short	30	White

PVT001

\$75
each



PVT SYRINGE

The PVT syringe can be used to quantify volume vs pressure and temperature vs pressure. Superior to the classical Boyle's Law syringe. Perfect for $PV=nRT$ investigations.



50200

\$59
per set

PERIODIC TABLE MAGNETIC CARDS

Features the first 20 elements of the Periodic Table to illustrate the core concepts of atomic theory as you sequentially build the table. Cards can be used to illustrate the following major concepts: Families and Periods, Atomic Number and Mass, Isotopes, and Electron Shells and Valency.

Size: 10.8 x 14.8cm

- Includes Elements 1-20 plus Hydride (H-), 14 additional elements (4 H, 3 O, 2 Cl, 1 F, 2 Na, 2 K), 3Mg Isotopes, and Au & Pb

SPECTROSCOPES

METAL-PRISMATIC

- For superior results
- Focus, adjustable slit, sharp lines

SPM001

\$99
each



PLASTIC

- Brilliant images
- With wavelength scale

3791001

\$40.50
each



CARDBOARD

- With diffraction grating
- Strong cardboard tube

F3093

\$11.60
each



STUDENT MINI VOLTAMETER

- Neat compact unit
- Easy to use student voltameter
- Includes electrodes

V2000

\$69
each



FTB001

\$28.50
set/10



FLAME TEST BOTTLE, 50ML

QUANTAM CHEMISTRY

Show cation flame colours quickly. Spray low concentration of solution directly into flame. NO MESS! NO CONTAMINATION!

FLAME TEST BOTTLE RACK

10 PLACES

FTB002

\$18
each



MEMORY WIRE (NITINOL)

CHANGES STRUCTURE

With teacher notes & lesson ideas.

CH832

\$15
each

30cm

CH932

\$40
each

90cm

Extra large & robust
Colour-coded atoms

JUPITER MOLECULAR MODELS



C130

\$34
each

SODIUM CHLORIDE MODEL KIT



C135

\$34
each

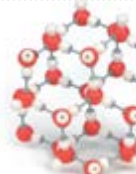
GRAPHITE MODEL KIT



C140

\$34
each

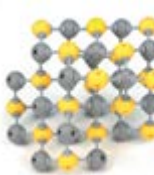
DIAMOND MODEL KIT



C145

\$38
each

WATER MODEL KIT



C150

\$38
each

ZINC SULFIDE MODEL KIT



C160

\$38
each

FULLERENE MODEL KIT



S23A

\$1,460
each

DIGITAL SPECTROPHOTOMETER

Determination of chlorophyll, yeast and bacterial growth with this apparatus. Perfect for environmental studies with many applications.

- Quality digital multipurpose unit
- Includes: Teacher guide, manual, cuvettes

CO0100

\$89
each



CO0101

\$110
each

With digital multimeter

STUDENT COLORIMETER

For accurate determination of concentrations. Battery powered.

- Includes: Instructions and test tubes

SALT-WATER FUEL CELL KIT

Now you can demonstrate a cutting edge fuel cell concept: combine a saltwater electrolyte with magnesium plates to generate electrical energy.

The Salt Water Fuel cell kit enables you to investigate the science behind salt water fuel cell technology, either by powering the included mini-turbine or creating your own power applications. Includes an experiment manual, teacher notes & classroom guide.

Salt water energy experiments:

- Features magnesium salt-water fuel cell power device
- Develop your own micro-fuel cell applications
- Create energy from salt water solution and power a fan
- Analyze current and voltage variation using different salt concentrations
- Analyze current and voltage variations using different temperatures
- Analyze current and voltage variations using different fuel volumes



G034
\$149
each



HYDROCAR FUEL CELL KIT

Great entry-level fuel cell kit. Demonstrates electrolysis of water into oxygen and hydrogen. Includes solar panel to power electrolysis process, experiment guide on CD, as well complete manual. Easy to build and operate, steers independently when meeting obstacles

KT2526
\$220
each

SPECTRUM DISCHARGE

SPECTRUM DISCHARGE TUBE

To show spectral lines of pure substances. Glass tubes with central capillary portion of about 9-10cm long with electrodes sealed at both ends and connected to lead wires protected by metal caps. Provided with loops welded to caps for electrical connection.

Except for Neon and Helium, these can not be used as lamps. For intermittent use.

- There are 2 ways to run the spectrum tubes:
 - with a spectrum tube power supply (3785001); or
 - with a spectrum tube holder (SAB), induction coil (EM013301) and power supply (2633001).

DIMENSIONS

Overall length: 260mm (L)

CODE	DESCRIPTION	UNIT	PRICE \$
HL132601	Argon	each	36
HL133601	Carbon Dioxide	each	36
HL134601	Helium	each	36
HL135601	Hydrogen	each	36
HL136601	Krypton	each	36
HL137601	Mercury Vapour	each	36
HL138601	Neon	each	36
HL139601	Nitrogen	each	36
HL140601	Oxygen	each	36
HL141601	Sulphur	each	36
HL142601	Water Vapour	each	36
1052007	Spectrum Tubes Set (H, Hg, He, N, Ne, Ar)	set/6	195

FROM
\$36
each



SPECTRUM DISCHARGE TUBE

3785001

SAB

SPECTRUM TUBE EHV POWER SUPPLY

Extra high voltage power supply 220/240V AC 50/60Hz fitted with a removable mains cable. (Spectrum tubes not included).

SAFE • COMPACT • EASY TO USE

- Includes 1x stainless steel rod, 1x clamp to hold the lamp
- Base: 172 x 140 x 140mm (L x W x H)
- Rod: 320mm (L)

3785001
\$315
each

SPECTRUM TUBE HOLDER, WITH TERMINALS

An apparatus to hold & clamp a spectrum tube. The height of the clamp can be adjusted to fit them length of the spectrum tube. Use with Rumkoff coil.

- External power source (EM013301) and (2633001). These items are not included.
- Base: 172 x 140 x 140mm (L x W x H)
- Rod: 1000mm (L)

SAB
\$79.80
set

WATCH A GARDEN GROW

NO SUNLIGHT REQUIRED



MT108
\$12.60
per kit

MAGIC GARDEN

A cutout cardboard landscape of flowers, trees and mountains that becomes covered in colourful crystal blossoms when placed in the chemical provided. Add the magic liquid and watch your crystal garden grow 25cm. Includes:

- 1 x Plastic Tray
- Pieces to make a Carboard Landscape
- Magic Liquid to make the Garden Grow



J930
\$17
per kit

CRYSTAL GROWING KIT

Crystals in nature can take thousands of years to grow, but you can create crystals in hours or just a few days with this crystal growing kit.

Grow your own sparkling crystal in the container provided.

Non toxic components.

KN3020

\$29
per kit

FUN CHEMISTRY

DISCOVER THE FUN OF SCIENTIFIC EXPERIMENTATION



CHEMICAL CLOCK RUN A CLOCK WITHOUT BATTERIES

Use Fruit Juice, Cola, even Soy Sauce to Generate Electricity! Includes:

- 1 x Clock Module
- 2 x Electrode Separator
- 2 x Water Column w/ Lid
- 2 x Zinc Electrode
- 3 x Wire w/ Crocodile Clip
- 2 x Copper Electrode
- 1 x Instruction manual

NEWTONIAN PUTTY STUDY MOLECULAR STRUCTURE

One of the most interesting materials to study! Comes in a screw top tub for easy storage and to prevent it from drying out. Truly amazing and great for experimentation. Non-toxic components.



HB2115
\$17
each

**STRETCH!
SHAPE!
SNAP!
BOUNCE!**

RACI PERIODIC TABLE CHART, 120 X 85CM

Announcing the new RACI – Haines Educational collaboration.

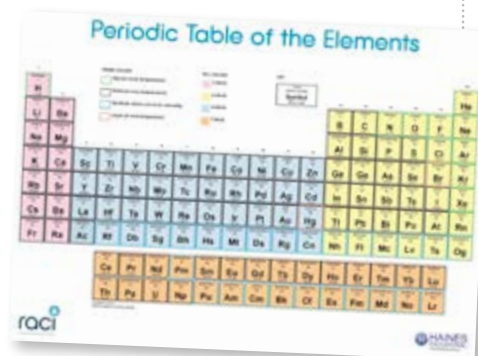
The Royal Australian Chemical Institute (RACI), in conjunction with Haines Educational, are pleased to announce the arrival of this new Periodic Chart. Large enough to be seen from the back of the classroom.

Size 120 x 85cm.

Made in Australia.

C982

\$59
each



LEMON CLOCK DISCOVER THE SCIENCE OF BATTERIES

Simply add your own lemon to turn this kit into an amazing lemon powered clock.



J938
\$11.50
per kit

JUMBO TEST TUBES + STAND

- Sturdy & durable, encourages inquiry-based investigation and hands-on observation
- Safe at temperatures from 10° - 80°C with 25/50/75/100ml calibration marks
- Includes 6 test tubes, rack and Activity Guide
- Tubes measure 15 x 3.75cm (H x dia)



L991

\$29
per set

HOFFMAN VOLTAMETER, ACRYLIC

NEW COMPACT PLASTIC, STAINLESS STEEL DESIGN

New design with all the classic features of a glass Hoffman Voltmeter. Safer and easier to store, minus the breakages. Includes instructions and a pair of platinum electrodes (spares available).

Made in Australia.
Size: 140 x 520mm.

GE1760

\$240
each



B131

\$69
each



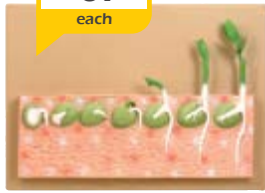
MONOCOT SEED GERMINATION (MAIZE)

Model shows germination of monocot plant (maize) seeds of development.

Size: 420 X 330 X 70mm (L x W x H)

B130

\$69
each



DICOT SEED GERMINATION (PEA)

Model shows the germination of dicot plant (pea) seeds of development.

Size: 330 x 230 x 50mm (L x W x H)

ACCUPOT

Designed by Jean Stokes of St. Michael's Grammar, this accurate potometer makes measuring transpiration rates a breeze. Ideal for individual student use.

- Portable and sturdy
- Tube graduated from 0.01 to 0.1ml
- Instructions included



Made in AUSTRALIA

HPOT

\$119
each

AM0072

\$235
each

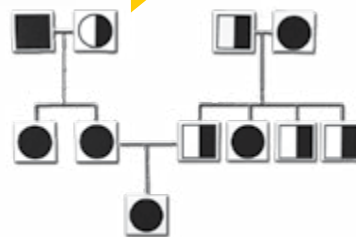


HUMAN HEART

4 PARTS, EXTRA LARGE

Model is cut by vertical line towards level of ventricular septum and separates into 2 parts after the arch of aorta and superior venacava have been removed. Mounted on base. Numbered with keycard.

Size: 33 x 23 x 33cm (H x W x D)



B201

\$39
per set

GENETIC & INHERITANCE MAGNETIC CARDS

Investigate how genes work in families using these 36 magnetic shapes, representing males and females with the 3 possible genetic combinations (affected/carriers/unaffected), all types of inheritance (complete/incomplete dominance whether autosomal/sex linked).

- Includes teacher's guide with actual case studies, lesson outlines and reproducible work sheets

MAGNETIC HUMAN BODY

Twice the life-science learning--skeletal system on one side and major organs and muscle groups on the other!

Creates a realistically detailed body more than 90cms high!

Includes 17 magnetic pieces
Features multilingual Activity Guide with reproducible diagrams for students to label



LER6044

\$49
per set

TECH TRAY

Polypropylene laboratory/dissecting tray. Hygienic, stackage, light weight, autoclavable with etched scale and anchor points (for securing specimens with string). Each tray is supplied with one disposable dissecting mat. 47 x 33.5cm

L1108

\$22
each

Note: Pictured labware not included



TECH TRAY, SPARE MATS, PKT/12

Removeable, disposable & washable dissecting mats. Tough enough to cut on but flexible enough to insert pins

L117

\$29.50
pkt/12

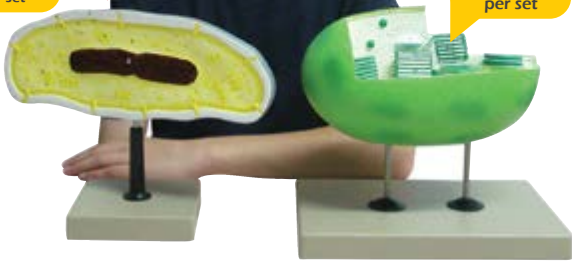


B164
\$99
per set

NEW

B062
\$155
per set

NEW



BACTERIA CELL STRUCTURE

This model shows the cell structure of a bacteria. Mounted on base. Numbered with keycard.
Size: 270 x 230 x 50cm

CHLOROPLAST

A greatly magnified example of the cell organelle of photosynthesis. Shows and highlights inner and outer membrane, Thylakoids, Grana and stoma. Mounted on base. Great model to explain photosynthesis. Numbered with keycard.
Dimensions: 255 x 240 x 200cm (L X W X H)



TYPICAL FLOWER DISSECTABLE

An enlarged idealised complete flower, teaching angiosperm pollination and fertilisation.

Dimensions: 370 x 250 x 310mm (L x W x H)

B001
\$69
per set

DNA MOLECULE MODEL

This 12-layer model (one complete turn of the double helix) is designed for self-assembly. The model may be assembled on the stand for display, or laid flat for a demonstration of unzipping and replication. It is also possible to combine this DNA model with an RNA model to explain transcription and protein synthesis.

Size: 24cm (H)

- Includes colour-coded bases (G,C,A and T), deoxyribose and phosphate groups, as well as a display stand
- On sturdy base



S060
\$65
per set

DELUXE ANIMAL CELL

ENLARGED 20,000X

Shows a detailed depiction of the animal cell and its structure. Includes the following organelles: nucleus, endoplasmatic reticulum, mitochondria, ribosomes, polysomes, and Golgi apparatus. Mounted on base with keycard.
Dimensions: 380 x 240 x 480cm



ZM2
\$179
per set

GIANT MAGNETIC ANIMAL CELL

24 PARTS

Teach the internal structure of an animal cell, individual organelles and structures individually with this giant cell structures printed on raised foam magnets. Ideal for demonstration or student manipulation.

- Includes 4-piece animal cell, 14 dimensional organelles and Activity Guide
- Background information about each organelle and reproducible diagram

Dimensions (largest piece): 115 x 60 x 160mm (L x W x H)

L6035
\$45
per set



PREHISTORIC HOMINID SKULL

NATURAL SIZE, SET/6

Review anatomical similarities.

Set consists of:

- Australopithecus afarensis
- Australopithecus africanus
- Homo erectus
- Homo sapien
- Homo habilis
- Homo neanderthalensis

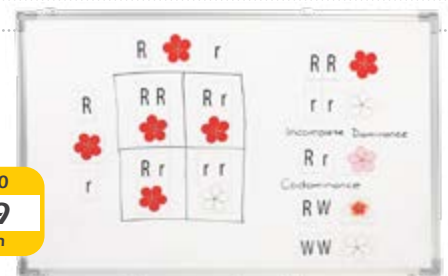
B127
\$450
set/6



STICK TO SCIENCE PUNNETT SQUARE

The Punnett square is a square diagram that is used to predict the genotypes of a particular cross or breeding experiment.

S180
\$49
each



BUDGET ANATOMICAL MODELS

- Made Of Fibre Reinforced Polyester Realistically Painted
- With Laminated Key Cards
- Ideal For Health & Safety Science / Open Days



6512
\$89
each

EYE

12 X 12 X 23CM, 6 PARTS, 5X
Sectioned horizontally and separates into upper half of the sclerotic membrane - 2, Retina with vitreous humour, lens, lower half of the sclerotic membrane. On base. Numbered with. English Key Card.



6516
\$89
each

EAR

25 X 18 X 15CM, 3 PARTS, 2X
Shows external, middle and internal portion. Ossicles and labyrinth can be taken out. On base. Numbered with English Key Card.



6511
\$95
each

BRAIN

19 X 15 X 15CM, 8 PARTS, HUMAN NATURAL SIZE
Separated into 8 parts and placed on diaphragm. Showing the temporal and occipital lobes, brain stem, cerebellum and the basilar artery. Model shows blood vessels all over on brain.



6523
\$85
each

SKIN

33 X 23 X 6CM, 70X, RAISED RELIEF
Shows section through three layers of the hair covered skin of the head. Also shows hair follicles with sebaceous, sweat glands, receptors, nerves and vessels. On base. Numbered with English Key Card.



6527
\$89
each

HEART

14 X 13 X 28CM, 4 PARTS, 2X
Model shows the auricles, ventricles, cardiac valves, large vessels and cardiac muscles, the upper section of the oesophagus, the upper bronchi and the ascending aorta. Mounted on base. Numbered with English Key Card.



MK019
\$42
each

PUMPING HEART

4-CHAMBER WORKING MODEL
A 3D working plastic heart model with clear chambers on a display stand. Squeeze bulb pump simulated blood through clear heart chambers just like real one.

Size: 140 x 140 x 175mm

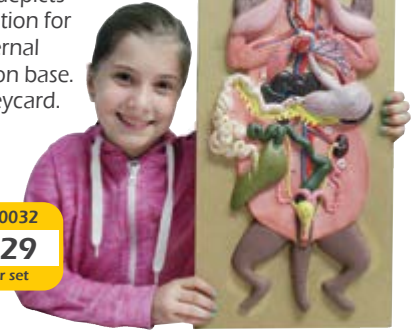
- Includes instruction manual

RAT DISSECTION

This model is used for anatomical study, depicts a full frontal dissection for viewing major internal organs. Mounted on base. Numbered with keycard.

Size:
610 x 300 x 50mm
(H x W x D)

ZM0032
\$129
per set



SOFT FOAM CROSS-SECTION MODELS

MAKE BIOLOGY FUN WITH "HANDS-ON" SQUASHY "CROSS SECTION MODELS"

Complete with activity guides
Each measure approx 13cm diameter

ANIMAL CELL

Teaching the parts of an animal cell

to your class is easy. The soft foam cell splits in half to show the key parts of an animal cell, including the nucleus, nucleolus, vacuole, centriole, cell membrane and more.

LER1900
\$32
each



PLANT CELL

This model of a plant cell splits in half to provide a cross-section view and make teaching the parts of a plant cell easy.

LER1901
\$32
each



GLOW GERM KIT

Glo Germ is a fantastic product which safely and graphically demonstrates how germs are spread. Glo Germ consists of an odourless lotion and powder which glows brightly when exposed to ultraviolet light. Perfect for your health curriculum.

Contains:

- 1x battery operated ultraviolet light, 17cm length
- 1x 240ml bottle of lotion (good for 75 to 100 applications)
- 1x 120ml bottle of powder
- 4x "AA" batteries

GLO210
\$189
per set



VCE(L)
\$310
each



VCE (L)

- Incident & transmitted light
- Widefield 10x eyepiece
- 2 objectives: 2x, 4x
- 20x, 40x magnification
- Parfocal & parcentered objectives
- Rubber eyecups

DELUXE(L)
\$395
each



STEREO DELUXE (L)

- Incident & transmitted light
- Widefield 10x eyepiece
- 2 objectives: 2x, 4x
- 20x, 40x magnification
- Parfocal & parcentered objectives
- Rubber eyecups



ZL001
\$99
each

MICROSCOPE, DIGITAL, 1.3MP

Plug this portable USB microscope into your computer and watch everyday objects come alive in amazing detail on the screen. Incredible! The tiny veins of a leaf, the delicate wings of an insect, the texture of a feather magnified 200 times their normal size.

BEST VALUE



QUADRAT

- 50 X 50cm with 10cm squares
- Stainless Steel, PVC coating

B118
\$36.50
each

E101
\$39
each



ANIMAL CELL ANATOMY

Teach the internal structure of an animal cell, individual organelles and structures individually.

- 150mm high with 24 detachable parts
- Detailed illustrated guide & info

E102
\$39
each



PLANT CELL ANATOMY

Teach the internal structure of a plant cell, individual organelles and structures individually and see how they work

- 160mm high with 24 detachable parts
- Detailed illustrated guide & info

PLANT PRESS

Large and sturdy plant press. Size: 250 x 250mm

FP001
\$32
each



HUGE HANDS FREE MAGNIFIER

2X MAGNIFICATION

Foldable for safe and easy storage. Bottom frame is ruled to 10cm for measuring objects to be viewed

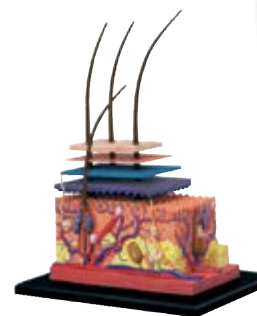
Excellent optics. Perfect for plastomounts, life specimens, semi permanent displays.

QM3505
\$18.60
each



ANATOMY MODELS ONLY AVAILABLE AT HAINES!

- Detailed models
- Detachable parts
- On display stand



E100
\$39
each

SKIN

Learn about the largest organ in your body. Comes with removable hair and skin layers with extra acne parts.

- 180mm high with 19 detachable parts
- Detailed illustrated guide & info

E103
\$39
each



DELUXE HEART

Learn about the organ that pumps blood to your entire body! Covers the Aortic, Arch, Superior Vena Cava and more.

- 125mm high with 31 detachable parts
- Detailed illustrated guide & info

GARDEN/SOIL TEST METER

THE ULTIMATE PLANT CARE / SOIL METER

The 3-in-1 marvel measures pH, light and moisture of your soil at the same time. No battery required. Instructions included.

- Moisture range: 1-10
- PH range: 3.5 - 8.0
- Light range: 0-2,000 LUX

GE333501
\$20
each



SCIENCE ESSENTIALS

GIGO SOLAR BUGGY

This buggy runs on solar or battery power. Includes:

- 37 pieces, 5 experiments included
- The multi-functional motor combines a solar panel, gears and a battery.
- A fan can be used along with the solar motor



BEST VALUE
7399
\$23
each

GIGO SOLAR CATAMARAN

This catamaran sails on solar or battery power. Includes:

- 44 pieces, 6 experiments included
- The multi-functional motor combines a solar panel, gears and a battery
- A fan can be used along with the solar motor



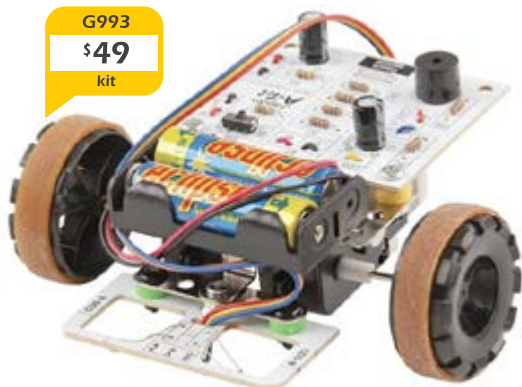
7398
\$23
each

ROBOTIC LINE TRACER KIT, PC PROGRAMMABLE

Get students involved in robotics and programming!

Assemble the kit and use it in one of two ways, programming mode or line tracing mode. With the supplied software and instructions get students to program the robot to navigate across the floor. In line tracing mode, simply draw a line on some paper with a thick black marker and the robot will follow the course. It accomplishes this with two optical sensors, somewhat similar to a common garden bug.

Requires 2 x AA batteries (not included).



G993
\$49
kit

MIRACLE MIRROR

This is a plastic hemisphere covered with aluminum. 14cm in diameter. The back side functions as a concave mirror and the front as a convex mirror. Reflections of the same object on opposite sides are dramatically different.



P980
\$99
each

AIR ZOOKER

Blast a harmless vortex of air up to 6m towards any object or person. Powerful enough to blow out a candle from across the room!

Safe and easy to assemble and use. Requires no batteries.



AIR-200
\$39
each **BEST SELLER**

SIMPLE MACHINES, SET OF 5 MACHINES

This set of 6 wooden machines are elegantly designed and easy for students to use. A great resource to have in the classroom.



P783
\$235
kit

ENERGY STICK

This item is a great introduction to the science of circuits and electricity! Conduct electrical energy through your students.

Make a human chain by holding hands then add the ENERGY STICK into the circle and watch it light up.



P325
\$14.80
each

BALLOON HELICOPTER

Inflate one of the balloons, pinch off the neck, attach the balloon to the rotor blades and watch this simple helicopter soar into the air! No batteries or jet fuel required! Great demonstration of Newton's third law.



FS029
\$38
10/pkt

BALANCING BIRD

This eagle balances on almost anything - your finger, a pencil, or the edge of your desk. Students can change the eagle's centre of gravity by adding small pieces of tape or paperclips to have it to balance perfectly. Individually packaged with a stand. Approx. 16 cm wing span.



G195
\$9.70
each

HAND BOILER

Glass hand boiler demonstrates Charles's Law. The liquid inside boils from the heat of human touch and expands forcing it upwards through the loop in the glass.

Science experiment in the palm of your hand that's fun to play with and great to look at.

G451
\$16
set



MIRAGE

MAKE A MIRAGE APPEAR BEFORE YOUR EYES!

Place any small object into mirage. Instantly, incredibly, they appear above it in full 3-Dimension. 153mm Ø

MIR001
\$35
each



FOUCAULT'S PENDULUM

Easy to use, compact instrument. Built simple device with an executive wooden stand, conceived as an experiment to demonstrate the rotation of the Earth - while also making intricate patterns in the sand.

Size: 55cm

G985
\$78
set



DRINKING BIRD

Shows cooling process of evaporation

HL001601
\$20
each

SIMPLE MACHINES SET

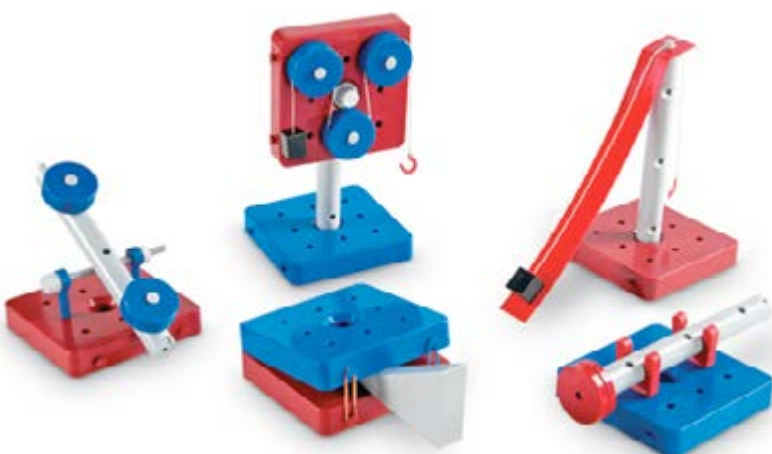
63 PIECES, BUILD ALL 5 MACHINES AT THE SAME TIME!

Construct, examine and explain simple machines to develop a deeper understanding of how they make work easier.

Contains enough pieces to build a lever, pulley, inclined plane, wheel and axle, and wedge—all at the same time. Modify machines with 4x weights (2x 5g and 2x 10g) and 8 included rubber bands to explore effort, force, load, motion and distance. Labeled pieces assemble easily and separate to store.

Activity Guide.

P2442
\$95
set



METALS TEST KIT

BEST SELLER

Test for magnetism, heat, conductivity, hardness etc.

- 12 pieces, each stamped for identification

PH0798A
\$14.20
each



BALL & RING APPARATUS

BEST SELLER

Demonstrate the expansion and contraction of metal.

Brass - Gravesande's



0200001
\$19.80
each

ELECTROSTATIC STICK

Slide the rubber sleeve along the clear plastic stick and watch the foam balls fly. A vivid demonstration in electrostatics. 30cm long.

ES001
\$29
each



IRON FILINGS

Ideal for experimentation with magnetic fields. Experiment with different magnets and create exciting magnetic lines of force. (magnet not included)

LER0802
\$39
set/5



NEWTON'S CRADLE, LARGE

Demonstrate the conservation of momentum and energy via a series of swinging spheres. Ask students to explain what's going on. Extra large size.

Dimensions 180(l) x 150(w) x 190(h) mm.

YRSC417
\$32
pack



PH0800
\$39
pack

MAGNET VARIETY TEST PACK

13 MAGNETS

A kit of magnets and accessories in a compartmental storage tray. Contents :

- 1x Horseshoe magnet, 6% chrome, 100mm, w/keeper
- 2x Ceramic bar magnets 75mm
- 3x Ceramic ring magnets, 38mm dia., face polarised
- 2x Plotting compasses, 19mm dia.
- 1x Pack Iron Filing.
- 1x square iron
- 1x aluminium
- 1x zinc
- 1x copper metal



RADIOMETER, CROOKE'S, EXTRA LARGE

Convert solar radiation into mechanical motion! Just place the radiometer in sunlight, or even in a beam of a bright torch and the black and white vanes inside the glass bulb begin to spin. The brighter the light, the faster the vanes will spin. No batteries required. Size: 220(H) x 75(D)mm

G524
\$59
each

PLASMA BALL

- Electrical current flows through negatively ionised gas to create the illusion of lightning
- Black back cover for increased lightning visibility
- Approx 20cm diameter
- Reacts to sound
- Lasts for up to 1000hrs

NEW

G221
\$65
each



BINOCULARS

Full size, plastic body.

- Eyepiece with Rubber Cushion
- Sensitive Focus Knob
- 35mm \varnothing Objective Lens
- Safety Neck Strap

BN-63501
\$25.20
each



SNAP CIRCUIT - EXTREME

OVER 750 EXPERIMENTS

- 70 computer interfaced experiments
- Study projects in solar power, electro-magnetism & vibration switches
- Uses 4 "AA" batteries
- Includes projects manual

SC750
\$245
per set

OVER 80
COMPONENTS



BEST SELLER

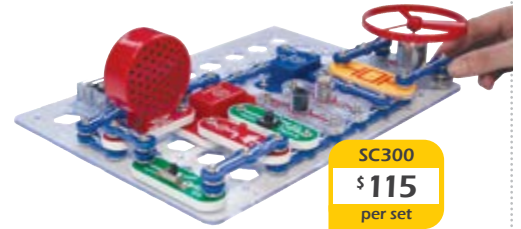
OVER 60
COMPONENTS

SNAP CIRCUIT - SUPER

OVER 300 EXPERIMENTS

The components and connector system are creatively designed to facilitate and optimize learning by engaging students in a meaningful way with exciting projects.

- Includes 80-page student guide with 300 electronic projects book



SC300
\$115
per set

SNAP CIRCUIT - JUNIOR

OVER 100 EXPERIMENTS

- Uses 2 "AA" batteries
- Includes projects manual.
- Ideal for years 6-9

P190
\$59
per set

OVER 30
COMPONENTS



SNAP CIRCUITS - ALTERNATIVE ENERGY

This kit features some of the latest innovations in alternative energy, put to use in working electronic projects kids can make using safe, easy-building Snap Circuits. Includes instructions for many other projects. Parts work with other Snap Circuits sets.

Using the hand-crank dynamo, solar panel and wind turbine, you can:

- light up an LED / power a clock / run a small radio / charge a rechargeable battery (included) / measure the energy created on an analog meter and much more

BEST SELLER



SC125
\$115
per set

BUZZ WIRE KIT

Learn how to connect an electric circuit. Design different wire shapes with varying levels of difficulty. The aim is to move the metal wand along the wire maze, from one end to the other, without actually touching the wire.

Includes:

- Plastic platform
- Plastic accessories & metal plugs
- Electric buzzer
- Insulated electric wire
- Bendable metal wire
- Instructions
- AA size Battery holder (Batteries not included)



G232
\$29.50
each

WATER FILTRATION KIT

Water goes on quite a journey to reach our taps, safe and ready to drink. One of the many important steps in the process is filtration, which uses layers to containments out of the water. The kit here introduces how water gets cleaned by building a simple filtration system and more. Measures 30cm high.

- Includes: 3x Gravel 80g / 3x Active Carbon 40g / 3x Sand 80g / 5x 100mm Filter Paper / 6x 45mm Filter Paper / 1x 50ml Measuring Cup



NEW
G055
\$45
each

LIQUIFLY WATER ROCKET, DELUXE

NEW IMPROVED DESIGN!

Use air and water to power the bottle rocket more than 100 feet into the atmosphere. Includes fins, two valves, 27cm rocket bottle, hose and pump.

G505
\$40.80
each



YEAR 7
ESSENTIAL

MINERALS SET, 20 PC

Samples of minerals all clearly labelled. In a neat wooden case (21x13cm). Asbestos free.

\$120
\$45
per set



ROCKS SET, 49 PIECE

Samples of igneous, metamorphic and sedimentary rocks. All clearly labelled. Rocks are stored in a neat wooden case (29x21cm). Asbestos free.

\$110
\$89
per set



MINERALS SET, 20 PC

Teach the measurement of natural phenomenon. Seismograph recorder with attached support and suspended weight registers visual shock waves from simulated earthquakes.

Size: 30 x 15 x 12.5cm



FRACTURES, FAULTS & DISLOCATIONS MODEL

Excellent way to illustrate various structures related to fault planes and fractures. Shows cross section of five different structural features. The features are labeled and a numbered key is printed on the base.

Size: 47.5(L) x 30(D) x 22.5cm(H)



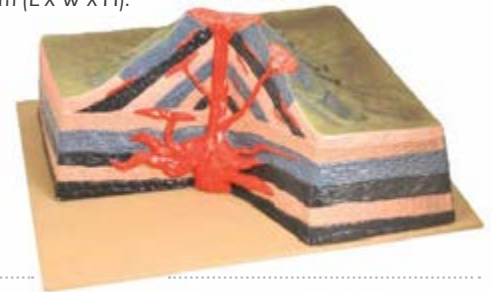
B582
\$155
each

VOLCANO MODEL

Section showing flow of magma. Made of unbreakable material, coloured. Showing vertical section for students to view the path that magma takes on its upward course. Mounted on base and numbered with English Key Card.

Size: 420 x 406 x 203mm (L x W x H).

B588
\$160
each



POLITICAL (GEOGRAPHICAL) GLOBE

Perfect desktop swivel globe for the classroom. 2-piece construction with a sturdy base

Size: 28cm diameter

GE007
\$39
each



QUADRAT GRID 50 X 50CM, 10CM GRID

Quadrat Grid-50x50 with 10cm squares. For taking population survey on flat terrain. Size. 50 x 50cm with 10cm grid size. Stainless steel PVC Coating.

B118
\$36.50
each



SIEVE, SET/3

Soil is made up of a range of particles from fine clay/silt to coarse sand and gravel. These particles can be separated and identified with the aid of mesh screens.

Sorting sieves, mesh size: 5 (4mm), 10 (2mm) and 60 (0.25mm)



ORBITOR MODEL, WITH LIGHT

Model demonstrates daylight, night, seasons and phases of moon. Sun, earth and moon revolve around one another on this gear driven model. Sun is 15cm in diameter. An illustrated guide is included.



SOLAR SYSTEM MODEL, WITH LIGHT

This three dimensional model allows students to study our solar system. Planets can be set by month to show their relative positions. The 15cm sun is supported on a sturdy base with the outer most (dwarf) planet being 45cm from the sun. An illustrated guide is included with planet position tables.

